

Quick guide

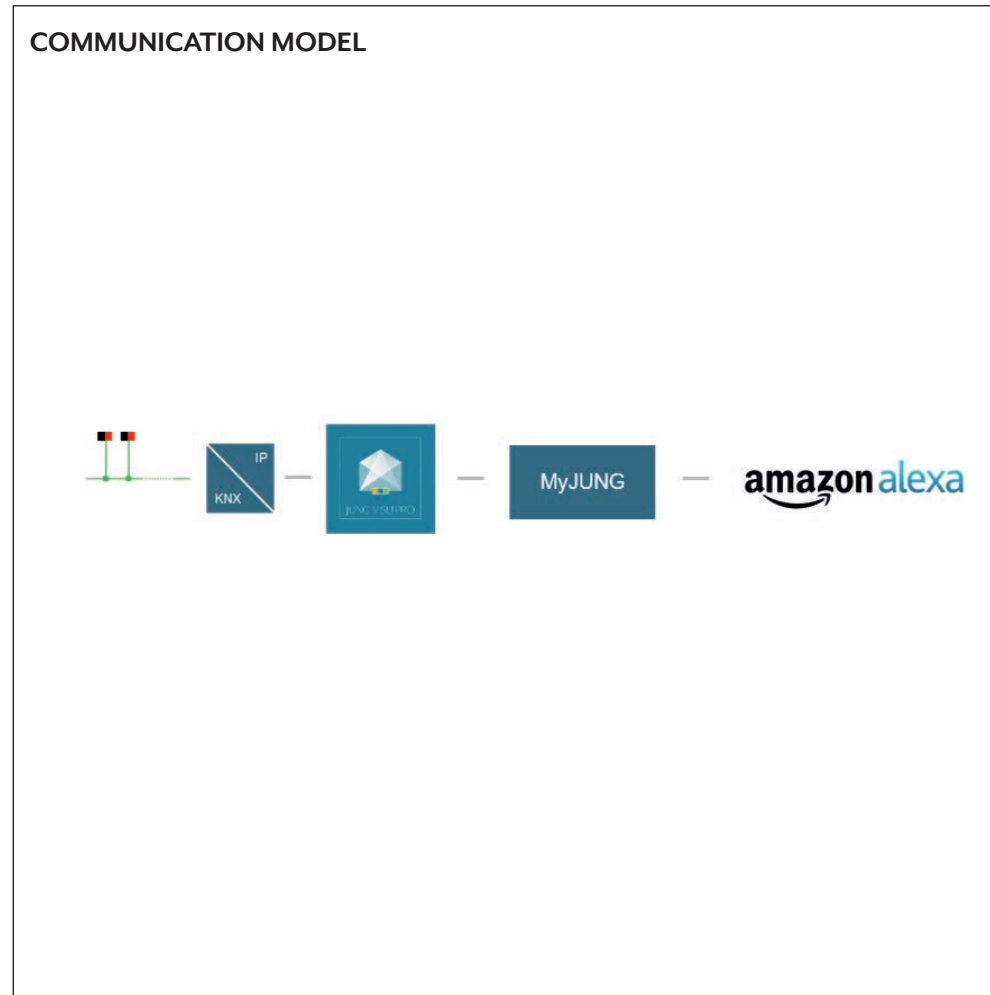


For the trade

1. Introduction

Using the Alexa “JUNG VISU PRO“ skill, you can control all devices connected to JUNG Visu Pro Software in your home via voice commands.

This quick guide explains the individual steps in detail using an example.



2. Overview

Your devices that are connected with JUNG Visu Pro Software can be controlled with an Amazon Alexa device by a simple Alexa skill.

The table on the right gives an overview of the necessary steps.

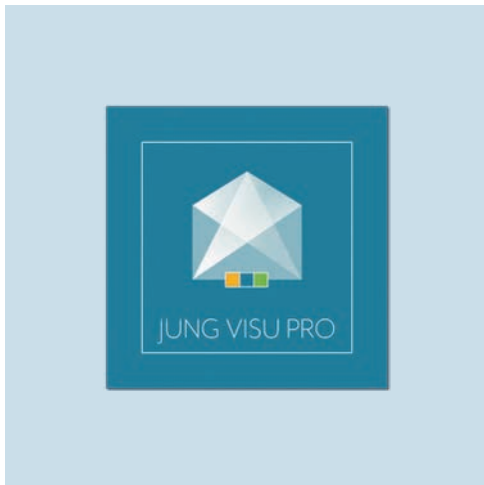
On the following pages, the individual steps are described in detail.

STEP		PAGE
1.	Install JUNG Visu Pro Software	4
2.	Create a MyJUNG-Account	4
3.	Set up access of JUNG Visu Pro Software to your KNX system	5
4.	Connect KNX connection to the process model	6
5.	Connect JUNG Visu Pro to your MyJUNG account	7
6.	Configuration of Alexa voice service	8
7.	Activate JUNG Visu Pro skill at the Amazon Alexa app	9

3. Commissioning JUNG Visu Pro Software

3.1 Initial operation

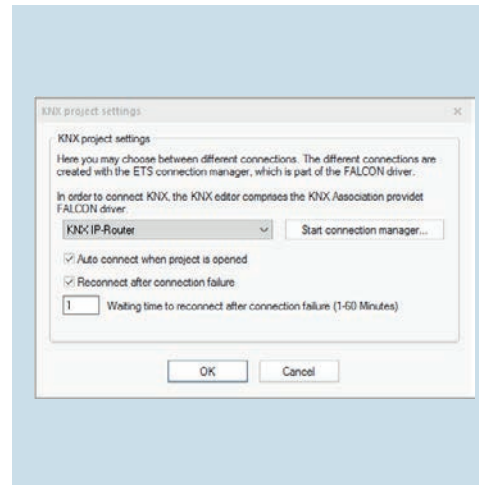
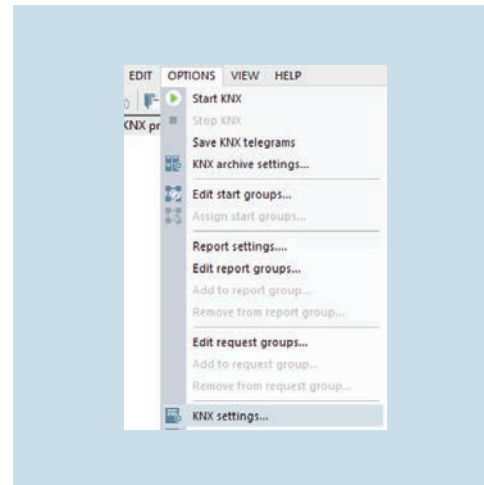
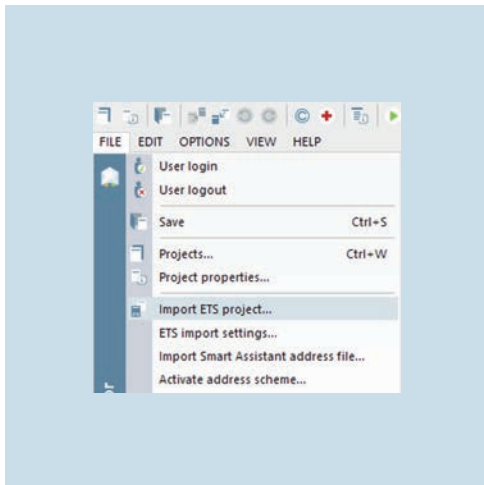
For the initial operation, in normal circumstances there is no software on device. The initial operation is carried out as follows:



1. Install the [JUNG Visu Pro Software](#) (min. 4.1.0.5) and register for free on the JUNG homepage at [MyJUNG](#).

4. Commissioning JUNG Visu Pro – KNX

Set up access to your KNX system in the JUNG Visu Pro software. For commissioning, note the following steps:



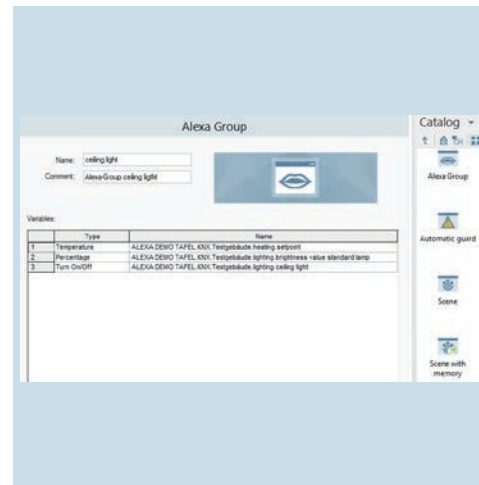
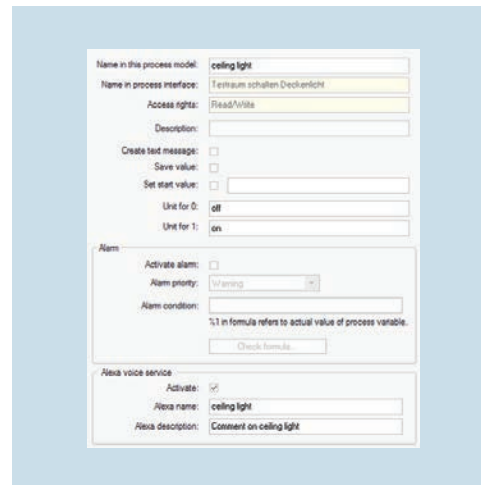
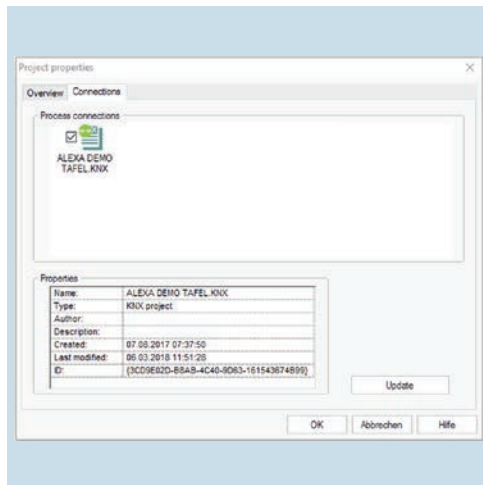
1. Open the **KNX editor**, create a new project under **File** and **import** the previously created ETS projekt there.
2. Open under **Options** the **KNX settings**.
3. Establish the connection through the **connection manager** with the KNX system and confirm with **OK**.

5. Commissioning JUNG Visu Pro – process model

Using the process model, you connect all process editors like KNX, Brumberg oder VitalLED on a common level.

5.1 KNX connection connect

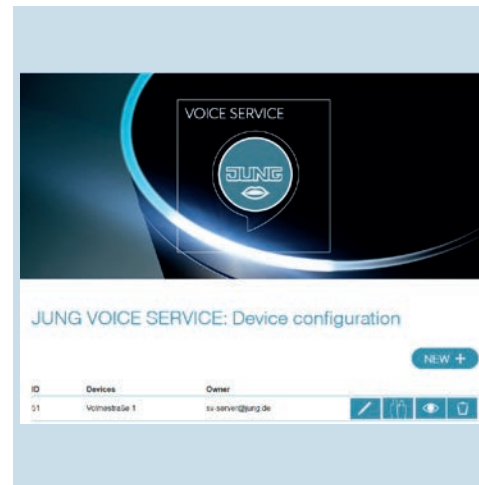
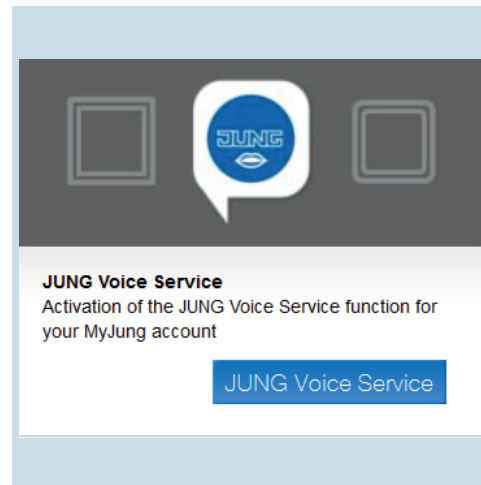
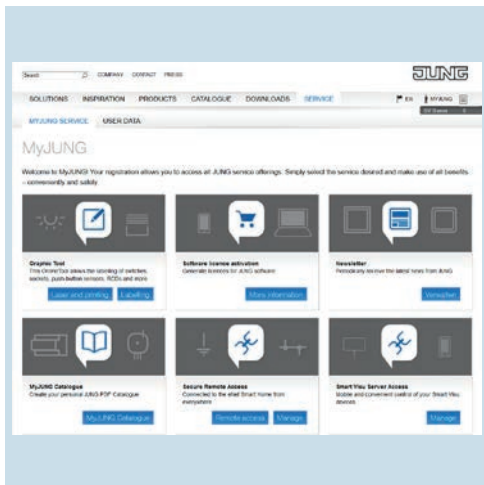
First connect all desired process editors with the process model.



1. Open the [process model](#), create a new project and connect the previously created process editors. Confirm this step with **OK**.
2. Activate the desired data points with the [Alexa voice service](#) and assign an [Alexa name](#), incl. an [Alexa description](#) (e. g. [nightlight](#) or [switch nightlight](#)). Currently possible data points are 1 bit, 1 byte und 2 bytes.
3. Alternatively, create an [Alexa Group](#) under [Functions](#) → [Controller](#). This is needed if a function with more than one data point can be addressed (e. g. dimming).

5.2 Connect JUNG Visu Pro with MyJUNG

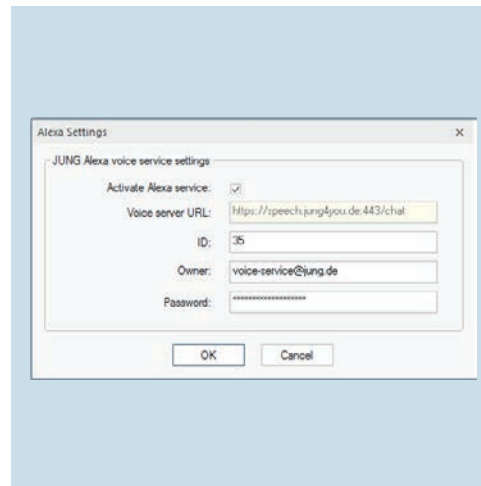
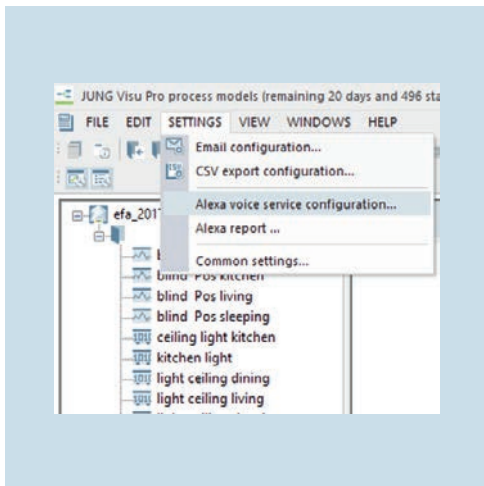
After that you have to connect the installation to your MyJUNG account.



1. Log in to your [MyJUNG](#) account on the JUNG homepage.
2. Select the [JUNG Voice Service](#) tile and confirm the [privacy policy](#).
3. Create an [Alexa installation](#) by selecting your [name](#) and [password](#). Afterwards an [ID](#) will be generated automatically.

5.3 JUNG Visu Pro – Configure Alexa voice service

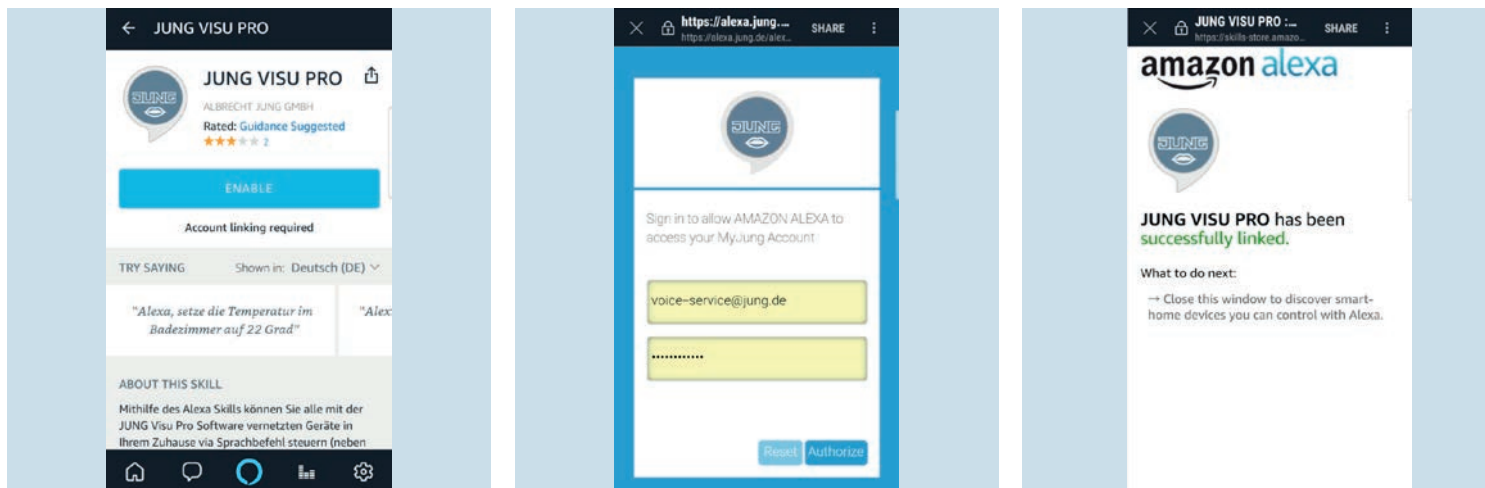
Finally you have to configure the Alexa voice service.



1. Select in the process model under **Settings** the **Alexa voice service configuration**.
2. Enter the previously created **installation data** in the **Alexa Settings** of the process model.

6. Activation of JUNG Visu Pro skill

Now connect the JUNG Visu Pro skill to your MyJUNG account.



1. Search for the **JUNG Visu Pro** skill in the Amazon Alexa app.
2. Activate the skill by entering your **MyJUNG**-Login and connect to your JUNG Visu Pro installation.
3. Done! You only have to search for your devices.

Any questions?

We are pleased to help.

ALBRECHT JUNG GMBH & CO. KG

P.O. Box 1320

58579 Schalksmühle

Germany

Telephone +49 (0) 23 55 / 80 65 56

Telefax +49 (0) 23 55 / 80 63 65

E-Mail international@jung.de

For sales contacts in your country see:

jung-group.com/contact

JUNG-GROUP.COM